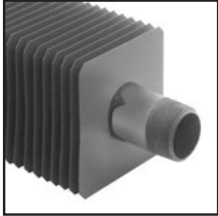
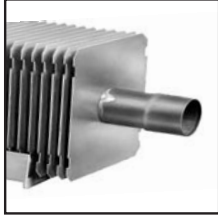


BARE ELEMENTS

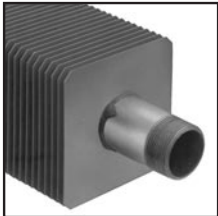
STEEL ELEMENTS • COPPER/ALUMINUM ELEMENTS



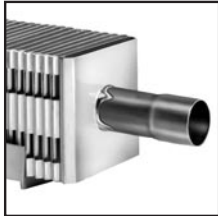
S-532



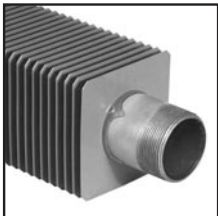
H-1



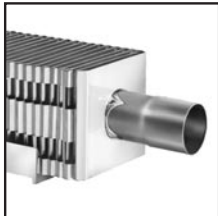
S-540



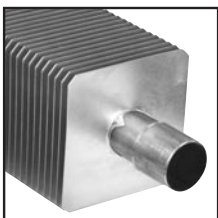
H-3



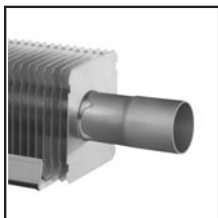
S-832



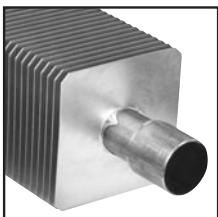
H-4



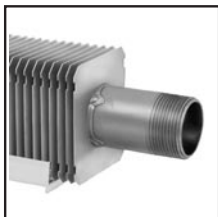
C-340



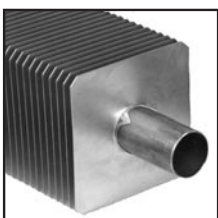
H-5X



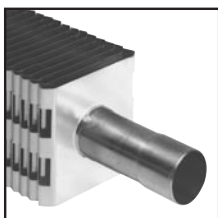
C-440



H-6X



C-540



E-75

STRONGER, EASY TO JOIN ELEMENTS

Slant/Fin makes 12 types of fin-tube which may be used with the various enclosures shown in this catalog. Instead of light-wall tubing, Slant/Fin uses only copper seamless-drawn tubing or Schedule 40 steel pipe. Each fin has a tongue-and-groove collar which interlocks with the next fin for accurate and uniform spacing and prevents fins from twisting loose. This full wall thickness and strength of copper tubing and IPS steel pipe are maintained by forcing tubing through undersized fin holes under high hydraulic pressure. A force-fit mechanical bond is attained which maintains maximum heat transfer indefinitely.

Compact models (E-75, H-3 and H-4) feature double bent aluminum fins, providing extra heating surface in a slimmer profile. Edges of each fin are wedged against the next. Fins reinforce each other - won't be crushed, bent or twisted. End fins are of plated steel for extra ruggedness.

Expanded copper tubing ends eliminate couplings, reduce soldering. Steel elements are factory threaded at both ends.

ORDERING DATA

PACKAGING: Factory packaged in individual cartons (except E-75 which is packaged 3 elements to a carton). "E" and "H" elements include plastic expansion cradles.

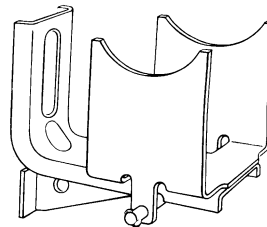
LENGTHS: Precut standard lengths

S and C Series: 2, 3, 3½, 4, 5, 6, 7, 8, 9, 10, 11, 12 feet. (C-340 up to 10 ft.)

E and H Series: 2, 3, 3½, 4, 5, 6, 7, 8 feet.

FINISH: Copper/aluminum elements - natural finish.

Steel elements - natural finish.



M-1 Expansion Hanger:

Specify for bare element installations.

SLANT/FIN CORPORATION

Greenvale, NY 11548

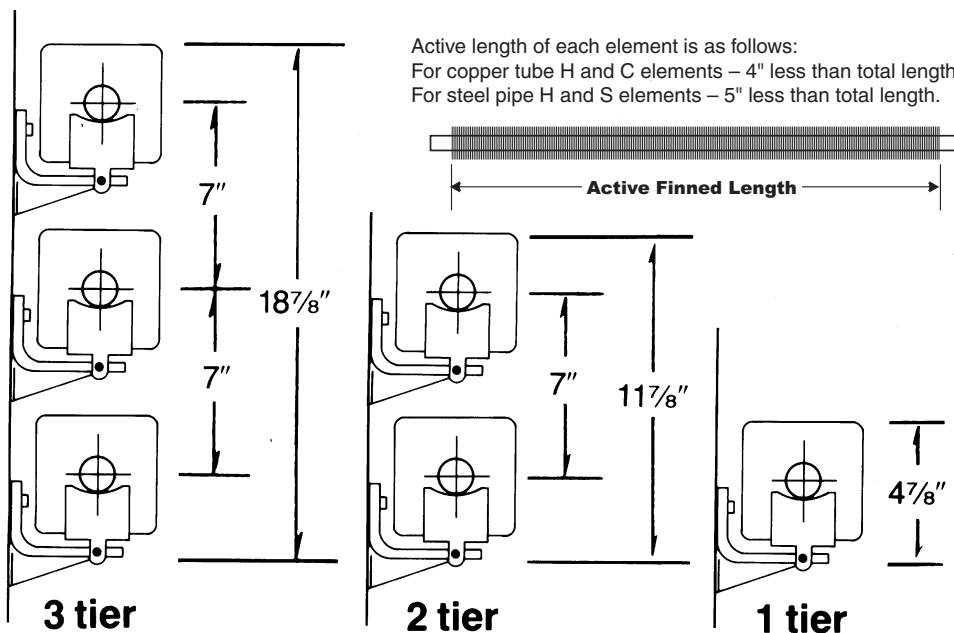
Canada: Slant/Fin Ltd/Ltee, Mississauga, Ontario

Phone: 516-484-2600 • Fax: 516-484-5921

BARE ELEMENT RATINGS

Model Number	Tube Size and Material	Fin Size and Material (Width x Height x Thickness)	Fins per Foot	No. of Tiers 7" cl	Pressure Drop †	Steam 1 PSI* Btu/Hr. Per Foot	HOT WATER RATINGS* BTU/HR./FT. (Flow Rate 3 Ft./Sec.)											
							110°F	120°F	130°F	140°F	150°F	160°F	170°F	180°F	190°F	200°F	210°F	220°F
S-532	1 1/4" IPS steel	4 1/4" x 4 1/4" x .024" electro-gal. steel	32	1	420	1080	216	281	356	432	486	572	659	745	842	929	1026	1134
						1950	390	507	644	780	878	1034	1190	1346	1521	1677	1853	2048
						2560	512	666	845	1024	1152	1357	1562	1766	1997	2202	2432	2688
S-540	1 1/4" IPS steel	4 1/4" x 4 1/4" x .024" electro-gal. steel	40	1	420	1200	230	300	370	460	540	640	730	830	940	1030	1140	1260
						2210	442	575	729	884	995	1171	1348	1525	1724	1901	2100	2321
						2810	562	731	927	1124	1265	1489	1714	1939	2192	2417	2670	2951
S-832	2" IPS steel	4 1/4" x 4 1/4" x .024" electro-gal. steel	32	1	252	1130	226	294	373	452	509	599	689	780	881	972	1074	1187
						2010	402	523	663	804	905	1065	1226	1387	1568	1729	1910	2111
						2650	530	689	875	1060	1193	1405	1617	1829	2067	2279	2518	2783
C-340	3/4" copper	4 1/4" x 4 1/4" x .020" aluminum	40	1	708	1610	322	419	531	644	725	853	982	1111	1256	1385	1530	1691
						2830	566	736	934	1132	1274	1500	1726	1953	2207	2434	2689	2972
						3620	724	941	1195	1448	1629	1919	2208	2498	2824	3113	3439	3801
C-440	1" copper	4 1/4" x 4 1/4" x .020" aluminum	40	1	504	1600	300	400	500	610	720	850	980	1100	1250	1380	1520	1680
						2710	542	705	894	1084	1220	1436	1653	1870	2114	2331	2575	2846
						3490	698	907	1152	1396	1571	1850	2129	2408	2722	3001	3316	3665
C-540	1 1/4" copper	4 1/4" x 4 1/4" x .020" aluminum	40	1	396	1600	300	400	500	610	720	850	980	1100	1250	1380	1520	1680
						2810	562	731	927	1124	1265	1489	1714	1939	2192	2417	2670	2951
						3600	720	936	1188	1440	1620	1908	2196	2484	2808	3096	3420	3780
H-1	3/4" copper	3" x 3 1/4" x .024" aluminum	48	1	708	218	283	360	436	491	578	665	752	850	937	1036	1145	
						392	510	647	784	882	1039	1196	1352	1529	1686	1862	2058	
						640	832	1056	1280	1440	1696	1952	2208	2496	2752	3040	3360	
H-5X	1 1/4" copper	3" x 3 1/4" x .020" aluminum	48	1	396	940	188	244	310	376	423	498	573	649	733	808	893	987
						1330	266	346	439	532	599	705	811	918	1037	1144	1264	1397
						2110	422	549	696	844	950	1118	1287	1456	1646	1815	2005	2216
H-6X	1 1/4" IPS steel	3" x 3 1/4" x .028" aluminized steel	48	1	420	850	170	221	281	340	383	451	519	587	663	731	808	893
						1290	258	335	426	516	581	684	787	890	1006	1109	1226	1355
						1840	368	478	607	736	828	975	1122	1270	1435	1582	1748	1932

* Based on 65°F entering air temperature. † Millinches per foot, based on flow rate of 3FPS; according to ASHRAE fundamentals handbook, 2001
 NOTE: H-3, H-4 and E-3 elements are not recommended for bare-element installation. H-1 is not recommended for steam applications.
 Ratings are based on active finned length (S & C series 5-1/4" less than overall length.) (H series—3" less than overall length.)



Dimensions for bare element installation without enclosures ("S" and "C" elements).

The installed height for elements is defined as the distance from the finished floor to the top of the fin. The minimum mounting height on all elements without enclosures is 5 3/4" from finished floor to bottom of fins of lowest element.

