

J SERIES

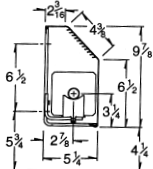
SLOPE-TOP, ONE-PIECE ENCLOSURE

**MODELS: JL-10, JR-10, JA-14, JR-14
JA-21, JR-21, JA-28, JR-28**

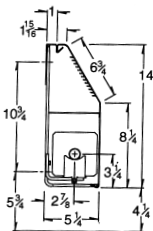


Custom Heights & Configurations Available

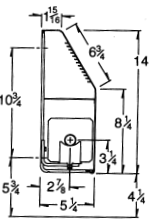
*Details for optional J-Series damper shown on model JAD-28



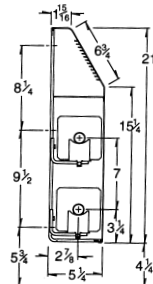
JL-10



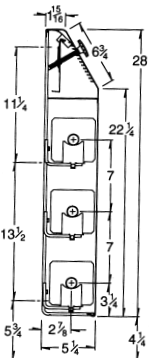
JR-14



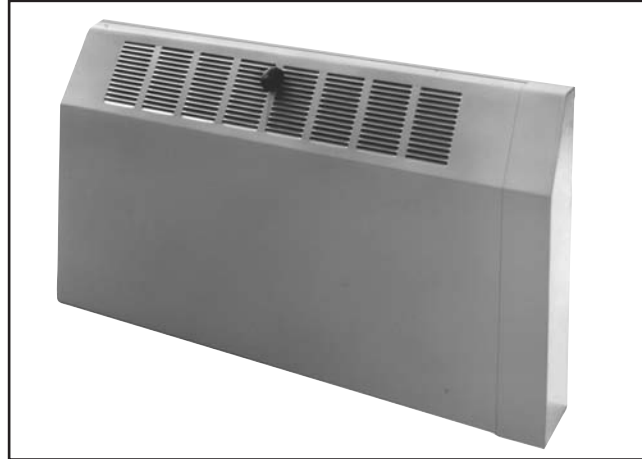
JA-14



JA-21



JAD-28*



ORDERING DATA

CONSTRUCTION: Single-piece cover mounts on wall brackets

DEPTH: 5 1/4"

HEIGHTS: 9 7/8" and 14" (one tier), 21" (one or two tier), 28" (up to three tier)

LENGTHS: 2', 3', 3 1/2', 4', 5', 6', 7', 8'. Other 1/2' lengths available to order.

MATERIAL: 18-gauge front cover. 16 and 14-gauge optional. Optional back panel: 20-gauge.

FINISH: Galvanized is standard. Baked enamel finishes in a variety of colors available on special order, all models.

WALL BRACKETS/HANGERS: Order separately, specify BKT (bracket only) or BKT ASSY (bracket complete with SC hangers) followed by cover stock number and quantity. Recommended bracket spacing is as follows:

Length	Copper Elements	1 1/4" Steel Elements	2" Steel Elements
2-5 ft.	2	1 per 2 1/2' of cover	1 per 2' of cover
6-8 ft.	3		

ELEMENTS: Copper with aluminum fins: C-340, C-440, C-540. Steel with electro-galvanized steel fins: S-532, S-540, S-832. Lengths from 2 to 12 feet. See p. 30.

JOINTS: Slip joint connectors (JR models only) and internal splice plates (JA models only; see p.5) align cover sections which butt to one another, providing a near seamless joint. Use of telescopic accessories with any J Series model eliminates the need to perfectly butt one length of cover to the next. Critical linear and vertical tolerances are eliminated because telescopic assembly absorbs misalignment

that might result from uneven floors and walls.

JL-10, JA-14 and JA-21 models mount flush with the wall. For readily available prepackaged two-piece fin-tube radiation refer to Multi/Pak 90, pages 4-11.

JR-10, JR-14, JR-21 and JR-28 models utilize a full or 4 inch back panel. Allows for 3/4" recess into wall and protects wall covering in case removing of enclosure is necessary. Electro-galvanized finish is standard. Optional baked enamel finish available.

Built for easy installation, long life

J Series fin-tube enclosures are functional, durable units, popular for deluxe commercial installations: schools, offices, hospitals, churches and office buildings. J Series enclosures feature a graceful, sloping louvered top which minimizes apparent bulk, and discourages use of the enclosure as a shelf or window seat.

- Pencil-proof louvers minimize "see through".
- Heavy duty 14-gauge wall bracket is drawn die formed. Secures cover in place with rigid spring lock action. Snap-in center brace supports middle of cover.
- Bracket mounting slots provide 3/4" height adjustment. Large recessed "flat" prevents bracket from crushing wall surface when back panel is not used.
- Element hanger has sliding guide rod that provides full cradle width support. 1 5/16" lateral movement permits smooth, noiseless expansion. Cradle supports finned or bare tubing at same height. Fastening slot in bracket allows 1 1/8" pitch adjustment.
- Knob-operated damper (optional) modulates fully to control output. See page 5 for details.

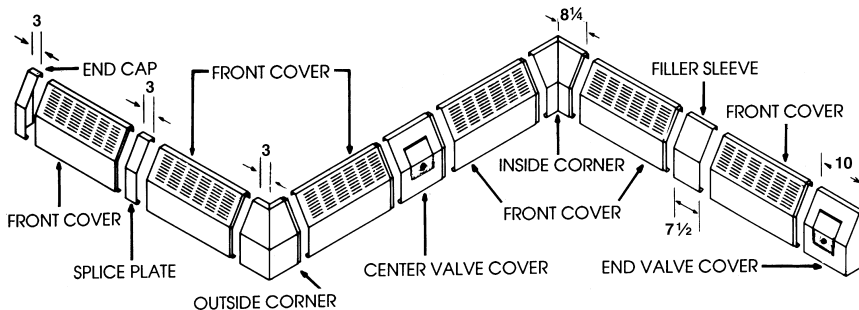
RATINGS

with or without dampers

Cover Type	Enclosure Height	Element Type	Tube Size and Material	Fin Size and Material	Fins Per Foot	Steam 1 PSI * Btu/Hr. Per Foot	HOT WATER RATINGS*							
							BTU/HR./FT. (Flow Rate 3 Ft./Sec.)							
							150°F	160°F	170°F	180°F	190°F	200°F	210°F	220°F
JL-10 JR-10	9 7/8"	S-532	1 1/4" steel	4 1/4" steel	32	1330	599	705	811	918	1037	1144	1264	1397
		S-540	1 1/4" steel	4 1/4" steel	40	1430	644	758	872	987	1115	1230	1359	1502
		S-832	2" steel	4 1/4" steel	32	1350	608	716	824	931	1053	1161	1283	1418
		C-340	3/4" copper	4 1/4" alum.	40	1753	789	929	1069	1210	1367	1507	1665	1840
		C-440	1" copper	4 1/4" alum.	40	1860	837	986	1135	1283	1451	1600	1767	1953
		C-540	1 1/4" copper	4 1/4" alum.	40	1820	819	965	1110	1256	1420	1565	1729	1911
JA-14 JR-14	14"	S-532	1 1/4" steel	4 1/4" steel	32	1380	621	731	842	952	1076	1187	1311	1449
		S-540	1 1/4" steel	4 1/4" steel	40	1550	698	822	946	1070	1209	1333	1473	1628
		S-832	2" steel	4 1/4" steel	32	1400	630	742	854	966	1092	1204	1330	1470
		C-340	3/4" copper	4 1/4" alum.	40	1839	828	975	1122	1269	1435	1582	1748	1932
		C-440	1" copper	4 1/4" alum.	40	1950	878	1034	1190	1346	1521	1677	1853	2048
		C-540	1 1/4" copper	4 1/4" alum.	40	1910	860	1012	1165	1318	1490	1643	1815	2006
JA-21 JR-21	21"	S-532	1 1/4" steel	4 1/4" steel	32	1460	657	774	891	1007	1139	1256	1387	1533
		S-540	1 1/4" steel	4 1/4" steel	40	1680	756	890	1025	1159	1310	1445	1596	1764
		S-832	2" steel	4 1/4" steel	32	1520	684	806	927	1049	1186	1307	1444	1596
		C-340	3/4" copper	4 1/4" alum.	40	2013	906	1067	1228	1389	1570	1731	1913	2114
		C-440	1" copper	4 1/4" alum.	40	2130	959	1129	1299	1470	1661	1832	2024	2237
		C-540	1 1/4" copper	4 1/4" alum.	40	2090	941	1108	1275	1442	1630	1797	1986	2195
JA-21 JR-21 Two-tier element	21"	S-532	1 1/4" steel	4 1/4" steel	32	2190	986	1161	1336	1511	1708	1883	2081	2300
		S-540	1 1/4" steel	4 1/4" steel	40	2380	1071	1261	1452	1642	1856	2047	2261	2499
		S-832	2" steel	4 1/4" steel	32	2270	1022	1203	1385	1566	1771	1952	2157	2384
		C-340	3/4" copper	4 1/4" alum.	40	2822	1270	1496	1721	1947	2200	2427	2784	2963
		C-440	1" copper	4 1/4" alum.	40	2990	1346	1585	1824	2063	2332	2571	2841	3140
		C-540	1 1/4" copper	4 1/4" alum.	40	2930	1319	1553	1787	2022	2285	2520	2784	3077
JA-28 JR-28	28"	S-532	1 1/4" steel	4 1/4" steel	32	1480	666	784	903	1021	1154	1273	1406	1554
		S-540	1 1/4" steel	4 1/4" steel	40	1710	770	906	1043	1180	1334	1471	1625	1796
		S-832	2" steel	4 1/4" steel	32	1550	698	822	946	1070	1209	1333	1473	1628
		C-340	3/4" copper	4 1/4" alum.	40	2051	924	1087	1251	1416	1600	1764	1949	2154
		C-440	1" copper	4 1/4" alum.	40	2170	977	1150	1324	1497	1693	1866	2062	2279
		C-540	1 1/4" copper	4 1/4" alum.	40	2130	959	1129	1299	1470	1661	1832	2024	2237
JA-28 JR-28 Two-tier element	28"	S-532	1 1/4" steel	4 1/4" steel	32	2290	1031	1214	1397	1580	1786	1969	2176	2405
		S-540	1 1/4" steel	4 1/4" steel	40	2510	1130	1330	1531	1732	1958	2159	2385	2636
		S-832	2" steel	4 1/4" steel	32	2430	1094	1288	1482	1677	1895	2090	2309	2552
		C-340	3/4" copper	4 1/4" alum.	40	2937	1322	1557	1792	2027	2291	2526	2791	3084
		C-440	1" copper	4 1/4" alum.	40	3110	1400	1648	1897	2146	2426	2675	2955	3266
		C-540	1 1/4" copper	4 1/4" alum.	40	3050	1373	1617	1861	2105	2379	2623	2898	3203
JA-28 JR-28 Three-tier element	28"	S-532	1 1/4" steel	4 1/4" steel	32	2830	1274	1500	1726	1953	2207	2434	2689	2972
		S-540	1 1/4" steel	4 1/4" steel	40	2930	1319	1553	1787	2022	2285	2520	2784	3077
		S-832	2" steel	4 1/4" steel	32	2880	1296	1526	1757	1987	2246	2477	2736	3024
		C-340	3/4" copper	4 1/4" alum.	40	3467	1560	1837	2115	2392	2704	2981	3293	3640
		C-440	1" copper	4 1/4" alum.	40	3670	1652	1945	2239	2532	2863	3156	3487	3854
		C-540	1 1/4" copper	4 1/4" alum.	40	3600	1620	1908	2196	2484	2808	3096	3420	3780

For ratings at lower water temperatures, refer to conversion table on page 33.
*Based on 65°F entering air temperature.

ACCESSORIES



A complete range of accessories lets you "fit" J-series in virtually any space configuration - fast and easily. Cover accessories are all telescopic. They snap in place without screws or other fasteners. All accessories have gray prime finish. Custom color available on special order.

non-telescopic accessories

- Column cover set
- Damper (electro galvanized)*
- Hanging strip*
- Tamper-proof lock
- Wall gasketing*

*See p.5 for details

telescopic accessories



End Cap
End Cap-slotted
(not shown)



Splice plate



Filler sleeve



Center valve cover



Inside corner, 90°



Outside corner, 90°



End valve cover,
slotted, 10°
End valve cover, 10°
(not shown)