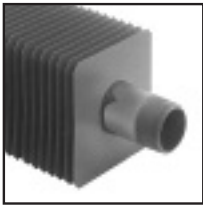




# DIMENSIONS – COMMERCIAL BASEBOARD

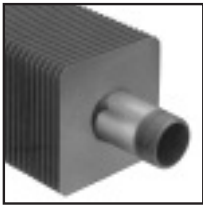
## BARE ELEMENTS



S-532



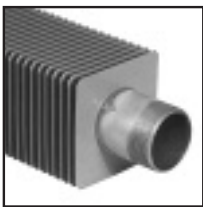
H-1



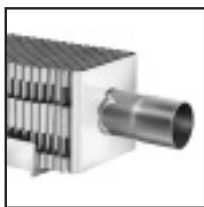
S-540



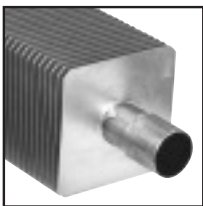
H-3



S-832



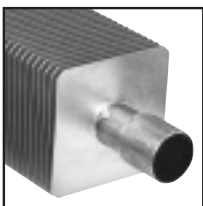
H-4



C-340



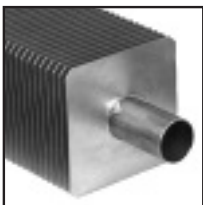
H-5X



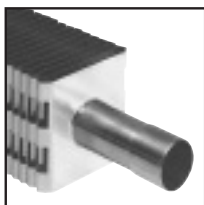
C-440



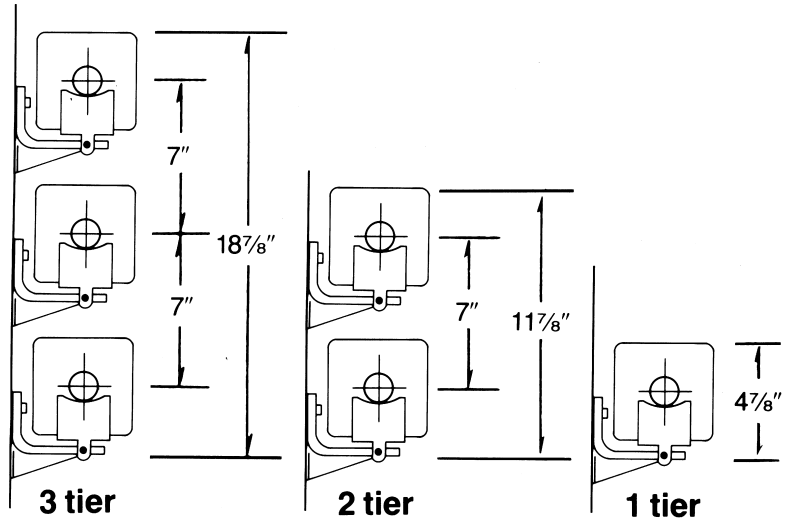
H-6X



C-540



E-75



Dimensions for bare element installation without enclosures ("S" and "C" elements).

Active length of each element is as follows:  
S and C series — 5 1/4" less than total length.  
E and H series — 3" less than total length.



The installed height for elements is defined as the distance from the finished floor to the top of the fin. The minimum mounting height on all elements without enclosures is 5 3/4" from finished floor to bottom of fins of lowest element.

