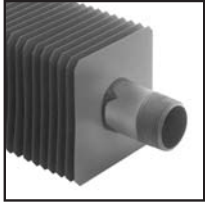


# BARE ELEMENTS

## STEEL ELEMENTS

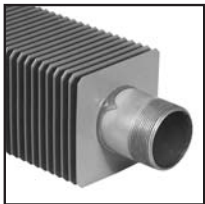
## COPPER/ALUMINUM ELEMENTS



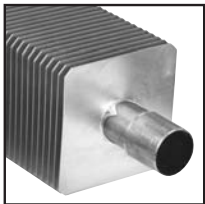
S-532



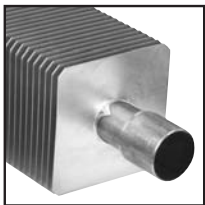
S-540



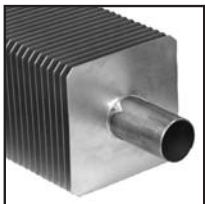
S-832



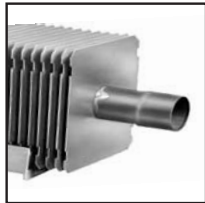
C-340



C-440



C-540



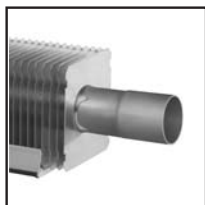
H-1



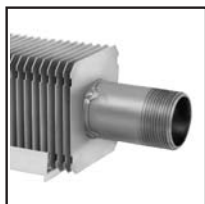
H-3



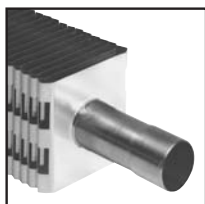
H-4



H-5X



H-6X



E-75

### STRONGER, EASY TO JOIN ELEMENTS

Slant/Fin makes 12 types of fin-tube which may be used with the various enclosures shown in this catalog. Instead of light-wall tubing, Slant/Fin uses only copper seamless-drawn tubing or Schedule 40 steel pipe. Each fin has a tongue-and-groove collar which interlocks with the next fin for accurate and uniform spacing and prevents fins from twisting loose. This full wall thickness and strength of copper tubing and IPS steel pipe are maintained by forcing tubing through undersized fin holes under high hydraulic pressure. A force-fit mechanical bond is attained which maintains maximum heat transfer indefinitely.

Compact models (E-75, H-3 and H-4) feature double bent aluminum fins, providing extra heating surface in a slimmer profile. Edges of each fin are wedged against the next. Fins reinforce each other - won't be crushed, bent or twisted. End fins are of plated steel for extra ruggedness.

Expanded copper tubing ends eliminate couplings, reduce soldering. Steel elements are factory threaded at both ends.

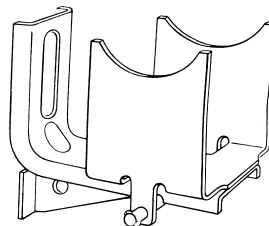
## ORDERING DATA

**PACKAGING:** Factory packaged in individual cartons (except E-75 which is packaged 3 elements to a carton). "E" and "H" elements include plastic expansion cradles.

**LENGTHS:** Precut standard lengths  
S and C Series: 2, 3, 3½, 4, 5, 6, 7, 8, 9, 10, 11, 12 feet. (C-340 up to 10 ft.)

E and H Series: 2, 3, 3½, 4, 5, 6, 7, 8 feet.

**FINISH:** Copper/aluminum elements - natural finish.  
Steel elements - natural finish.



### M-1 Expansion Hanger:

Specify for bare element installations.

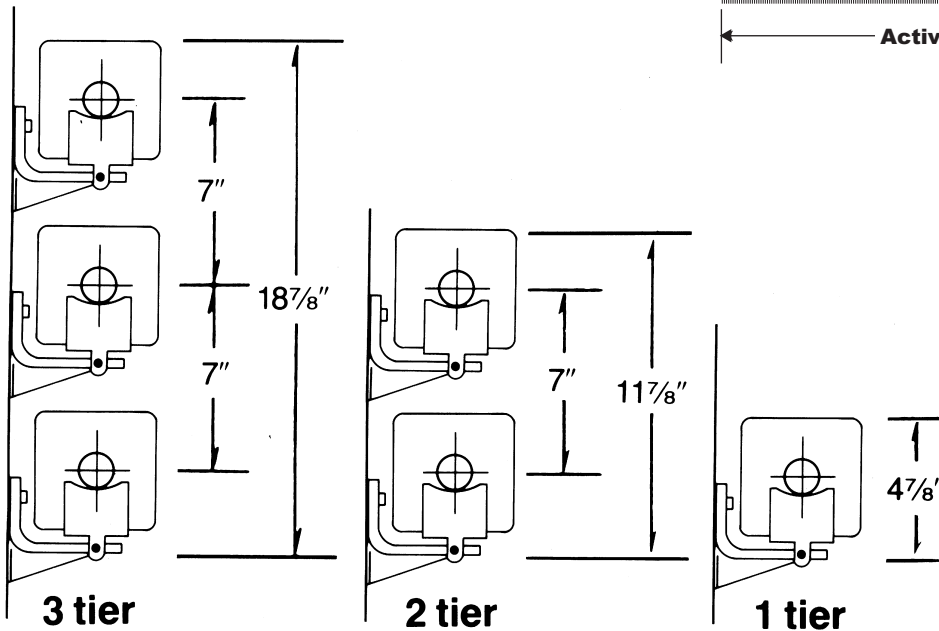
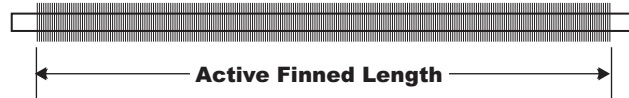
# BARE ELEMENT RATINGS

Model Number	Tube Size and Material	Fin Size and Material	Fins per Foot	No. of Tiers 7" cl	Pressure Drop †	Steam 1PSI Btu/Hr. Per Foot	HOT WATER RATINGS* BTU/HR./FT. (Flow Rate 3 Ft./Sec.)							
							150° F	160° F	170° F	180° F	190° F	200° F	210° F	220° F
S-532	1½" IPS steel	4¼" x 4¼" x .024" electro-gal. steel	32	1	420	1340	603	710	817	925	1045	1152	1273	1407
						2410	1085	1277	1470	1663	1880	2073	2290	2531
						3170	1427	1680	1934	2187	2473	2726	3012	3329
S-540	1½" IPS steel	4¼" x 4¼" x .024" electro-gal. steel	40	1	420	1490	671	790	909	1028	1162	1281	1416	1565
						2530	1139	1341	1543	1746	1973	2176	2404	2657
						3220	1449	1707	1964	2222	2512	2769	3059	3381
S-832	2" IPS steel	4¼" x 4¼" x .024" electro-gal. steel	32	1	252	1360	612	721	830	938	1061	1170	1292	1428
						2420	1089	1283	1476	1670	1888	2081	2299	2541
						3190	1436	1691	1946	2201	2488	2743	3031	3350
C-340	¾" copper	4¼" x 4¼" x .020" aluminum	40	1	708	1724	776	914	1052	1189	1344	1482	1638	1810
						3033	1366	1608	1851	2094	2366	2609	2882	3186
						3881	1747	2057	2367	2678	3027	3338	3687	4075
C-440	1" copper	4¼" x 4¼" x .020" aluminum	40	1	504	1830	824	970	1116	1263	1427	1574	1739	1922
						3210	1445	1701	1958	2215	2504	2761	3050	3371
						4110	1850	2178	2507	2836	3206	3535	3905	4316
C-540	1½" copper	4¼" x 4¼" x .020" aluminum	40	1	396	1790	806	949	1092	1235	1398	1539	1701	1880
						3150	1418	1670	1922	2174	2457	2709	2993	3308
						4030	1814	2136	2458	2781	3143	3466	3829	4232
H-1	¾" copper	3" x 3¼" x .024" aluminum	48	1	708	—	505	595	685	775	876	966	1067	1179
						—	717	844	972	1099	1243	1370	1513	1673
						—	1134	1336	1537	1739	1966	2167	2394	2646
H-5X	1½" copper	3" x 3¼" x .020" aluminum	48	1	396	1085	488	575	662	749	846	933	1031	1139
						1540	693	816	939	1063	1201	1324	1463	1617
						2435	1096	1291	1485	1680	1899	2094	2313	2557
H-6X	1½" IPS steel	3" x 3¼" x .028" aluminized steel	48	1	420	950	428	504	580	656	741	817	903	998
						1440	648	763	878	994	1123	1238	1368	1512
						2050	923	1087	1251	1415	1599	1763	1948	2153

NOTE: H-3, H-4 and E-3 elements are not recommended for bare-element installation. H-1 is not recommended for steam applications.

For ratings at lower water temperatures, refer to conversion table on page 33.  
 \* Based on 65°F entering air temperature  
 † Millinches per foot, based on flow rate of 3FPS; according to ASHRAE fundamentals handbook, 2001.

Active length of each element is as follows:  
 S and C series — 5¼" less than total length.  
 E and H series — 3" less than total length.



Dimensions for bare element installation without enclosures ("S" and "C" elements).

The installed height for elements is defined as the distance from the finished floor to the top of the fin. The minimum mounting height on all elements without enclosures is 5¾" from finished floor to bottom of fins of lowest element.

