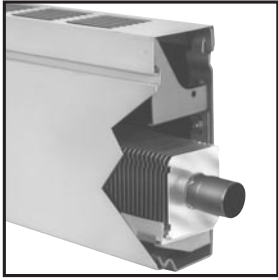


**Slant/Fin**

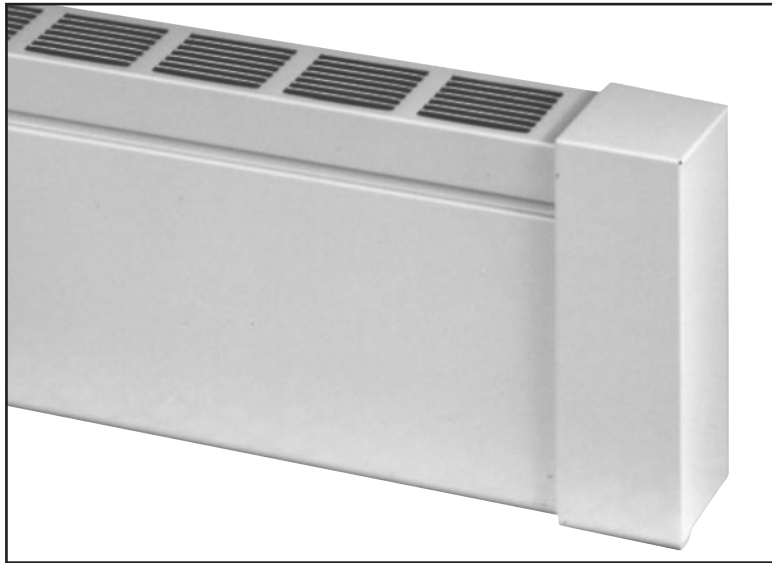


# MULTI/PAK<sup>®</sup> 93

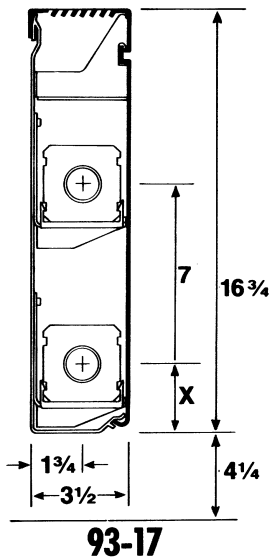
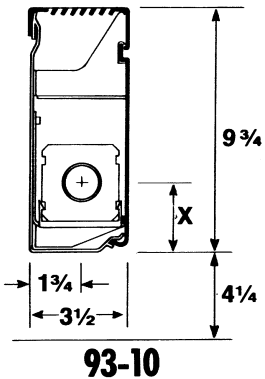
## FLAT-TOP, TWO-PIECE ENCLOSURE

*Pre-painted. Factory packaged.*

### MODELS 93-10 AND 93-17



ELEMENT	X
H1	3 <sup>3</sup> / <sub>16</sub>
H3	2 <sup>13</sup> / <sub>16</sub>
H4	2 <sup>13</sup> / <sub>16</sub>
H5X	3 <sup>3</sup> / <sub>16</sub>
H6X	3 <sup>3</sup> / <sub>16</sub>
E-75	2 <sup>7</sup> / <sub>8</sub>



## ORDERING DATA

### Multi/Pak 93 Complete Enclosure Assembly

**PACKAGING:** Complete two-piece assembly factory packaged with necessary brackets and hangers.

**CONSTRUCTION:** Two-piece interlocking top cover/front cover mount on wall brackets. Lock in place to provide the same shape with better rigidity than one-piece covers.

**DEPTH:** 3<sup>1</sup>/<sub>2</sub>"

**HEIGHTS:** 9<sup>3</sup>/<sub>4</sub>" (one tier), 16<sup>3</sup>/<sub>4</sub>" (one or two tier)

**LENGTHS:** 2', 3', 3<sup>1</sup>/<sub>2</sub>', 4', 5', 6', 7', 8'.

**MATERIAL:** 18-gauge galvanized steel top and front cover. 11-gauge wall brackets.

**FINISH:** Nu-White baked enamel is standard. Custom color available on special order.

**WALL BRACKET/HANGERS:** Packaged with complete assembly. Element hangers permit vertical pitch adjustment. Self-adjusting polypropylene element expansion cradles allow silent lateral expansion movement. Brackets and hangers provided with complete assembly as follows:

Length	93-10		93-17	
	Brackets	Hangers	Brackets	Hangers
2-5 ft.	2	2	2	4
6-8 ft.	3	3	3	6

**ELEMENTS:** Copper with aluminum fins: H-1, H-3, H-4, H-5X, E-75. Steel with electro-galvanized steel fins: H-6X. Lengths from 2 to 8 ft. See p.30.

**JOINTS:** Telescopic cover accessories eliminate the need to perfectly butt one length of cover to the next. Critical linear and vertical tolerances are eliminated because telescopic assembly absorbs misalignment that might result from uneven floors and walls. See pages 4-5 for description of features.

ALUMINUM GRILLES IS NOT AVAILABLE.

### Multi/Pak 90 Series two-piece fin-tube enclosure. The modern choice in commercial radiation.

- Available as a "stock item".
- Factory packaging protects the cover until ready to install.
- Easy to install. Easy to service.
- Precut lengths, telescopic accessories, speed installations.
- Nu-White baked enamel finish.



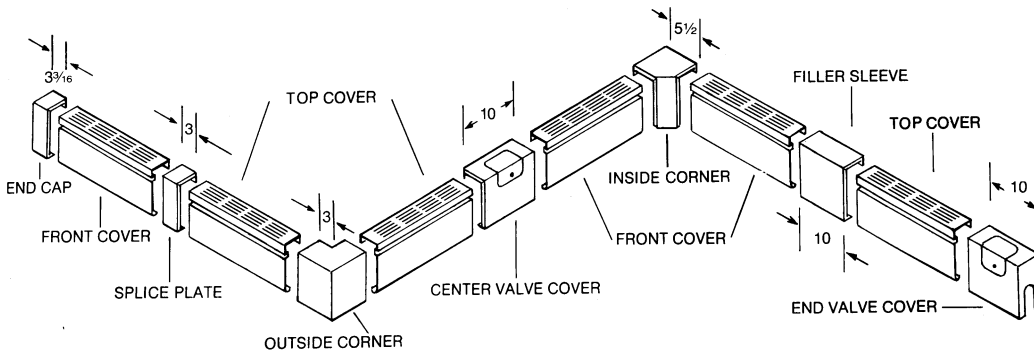
# RATINGS

With or without dampers

Cover Type	Enclosure Height	Element Type	Rows of Heating Elements	Tube Size & Material	Fin Size and Material (Width x Height x Thickness)	Fins Per Foot	Steam 1 PSI* Btu/Hr. Per Foot	HOT WATER RATINGS* BTU/HR./FT. (Flow Rate 3 Ft./Sec.)											
								110°F	120°F	130°F	140°F	150°F	160°F	170°F	180°F	190°F	200°F	210°F	220°F
93-10	9 1/2"	H-1	1	3/4" copper	3" x 3 3/4" x .024" aluminum	48	1079	216	281	356	432	486	572	658	745	848	928	1025	1133
		H-3	1	3/4" copper	2 3/4" x 2 1/2" x .011" aluminum	55	991	198	258	327	396	446	525	605	684	773	852	941	1041
		H-4	1	1" copper	3" x 2 1/2" x .011" aluminum	48	965	193	251	319	386	434	511	589	666	753	830	917	1013
		H-5X	1	1 1/4" copper	3" x 3 3/4" x .020" aluminum	48	1030	206	268	340	412	464	546	628	711	803	886	979	1082
		H-6X	1	1 1/4" IPS Steel	3" x 3 3/4" x .028" aluminized steel	48	883	177	230	291	353	397	468	539	609	689	759	839	927
		E-75	1	3/4" copper	2 5/8" x 2 5/8" aluminum	55	828	166	215	273	331	373	439	505	571	646	712	787	869
93-17 One-tier element	16 1/2"	H-1	1	3/4" copper	3" x 3 3/4" x .024" aluminum	48	1182	236	307	390	473	532	626	721	816	922	1017	1123	1241
		H-3	1	3/4" copper	2 3/4" x 2 1/2" x .011" aluminum	55	1086	217	282	358	435	489	576	662	749	847	934	1032	1140
		H-4	1	1" copper	3" x 2 1/2" x .011" aluminum	48	1057	211	275	349	423	476	560	645	729	824	909	1004	1110
		H-5X	1	1 1/4" copper	3" x 3 3/4" x .020" aluminum	48	1128	226	293	372	451	508	598	688	778	880	970	1072	1184
		H-6X	1	1 1/4" IPS Steel	3" x 3 3/4" x .028" aluminized steel	48	947	189	246	313	379	426	502	578	653	739	814	900	994
		E-75	1	3/4" copper	2 5/8" x 2 5/8" aluminum	55	907	181	236	299	363	408	481	553	626	707	780	862	952
93-17 Two-tier element	16 1/2"	H-1	2	3/4" copper	3" x 3 3/4" x .024" aluminum	48	1679	336	437	554	672	756	890	1024	1159	1310	1444	1595	1763
		H-3	2	3/4" copper	2 3/4" x 2 1/2" x .011" aluminum	55	1543	309	401	509	617	694	818	941	1065	1204	1327	1466	1620
		H-4	2	1" copper	3" x 2 1/2" x .011" aluminum	48	1501	300	390	495	600	675	796	916	1036	1171	1291	1426	1576
		H-5X	2	1 1/4" copper	3" x 3 3/4" x .020" aluminum	48	1602	320	417	529	641	721	849	977	1105	1250	1378	1522	1682
		H-6X	2	1 1/4" IPS Steel	3" x 3 3/4" x .028" aluminized steel	48	1435	287	373	473	574	646	761	875	990	1119	1234	1363	1507
		E-75	2	3/4" copper	2 5/8" x 2 5/8" aluminum	55	1288	258	335	425	515	580	683	786	889	1005	1108	1224	1352

\* Based on 65°F entering air temperature. **Note:** Ratings are based on active finned length (3" less than overall length).

# ACCESSORIES



Fourteen accessories let you "fit" Multi/Pak 93 in virtually any space configuration – fast and easily. Cover accessories are all telescopic. They snap in place without screws or other fasteners. All accessories, unless noted, are finished in Nu-White baked enamel. Custom color available on special order.

## non-telescopic accessories

Column cover set  
 Damper (electro galvanized)\*  
 Hanging strip\*  
 Tamper-proof lock  
 Wall gasketing\*

\*See p.3 for details

## telescopic accessories



End Cap  
 End Cap-slotted  
 (not shown)



Splice plate



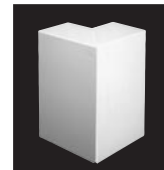
Filler sleeve



Center valve cover †



Inside corner, 90°



Outside corner, 90°



End valve cover, †  
 slotted, 10"  
 End valve cover, 10"  
 (not shown)

† Access doors: 6" x 6". Door location depends on model.